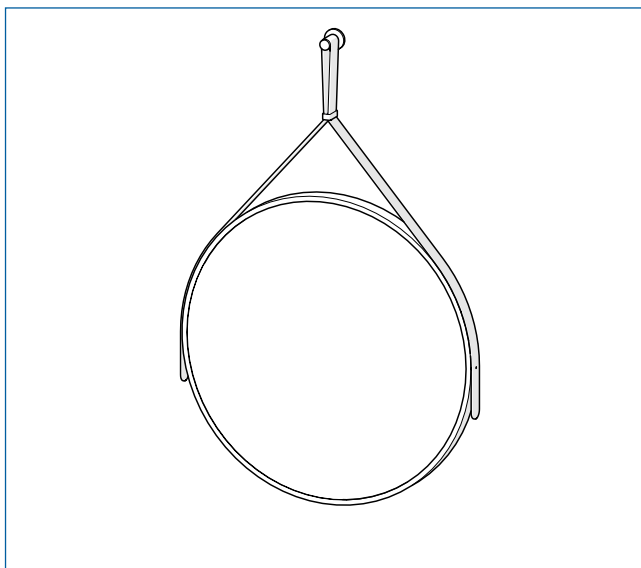


QA2010##

METAL FRAMED MIRROR WITH STRAP



CONTACT DETAILS

UK: Croydex, Central Way, Andover, Hampshire,
SP10 5AW, UK

EU: MIL, Unit 8 Purcellsinch Ind Est, Dublin Road,
Kilkenny, R95 HP71, Ireland

Tel: +44 (0)1264 365881

Email: info@croydex.co.uk

www.croydex.com

**ALL PRODUCT DIMENSIONS DETAILED IN THIS INSTALLATION AND
MAINTENANCE MANUAL ARE APPROXIMATE**

**ALL ILLUSTRATIONS OF THE PRODUCT ARE FOR REFERENCE ONLY.
COMPONENTS SUPPLIED WITH INDIVIDUAL PRODUCTS MAY DIFFER**

- Please follow the instructions provided to ensure that your product is assembled and fitted safely, and retains its high quality finish.
- Before attempting to fit or use this product, ensure that it can be properly installed in the desired location.

PLEASE RETAIN THIS MANUAL FOR FUTURE REFERENCE

SAFETY & PRODUCT CARE

1. **ALWAYS** take care when using power tools, particularly if there is any water in the working area.
2. **ALWAYS** check for hidden cables and pipework before drilling and take extreme care if there is any water in the working area.
3. **ALWAYS** use a Residual Current Circuit Breaker (RCCB)
4. **ALWAYS** wear suitable eye protection when drilling.
5. **DO NOT** use a hammer drill when drilling through a tile.
6. **ALWAYS** use a drill bit that is suitable for the surface that is being drilled.
7. **DO NOT** use power tools for assembling the product including power drills and power screwdrivers.
8. **DO NOT** drill on the grout line of tiles.
9. **DO NOT** hang the mirror on the strap. The strap and hook are decorative and not load bearing.
10. **DO NOT** use abrasive or chemical cleaners as these may damage the product.
11. **DO NOT** strike the mirror with hard or sharp objects.





ALWAYS CHECK THE PACKAGING FOR FIXINGS AND PARTS BEFORE THROWING AWAY AND RECYCLING.

ENSURE YOU HAVE ALL THE FIXINGS AND PARTS BEFORE ATTEMPTING TO ASSEMBLE OR FIT THIS PRODUCT.

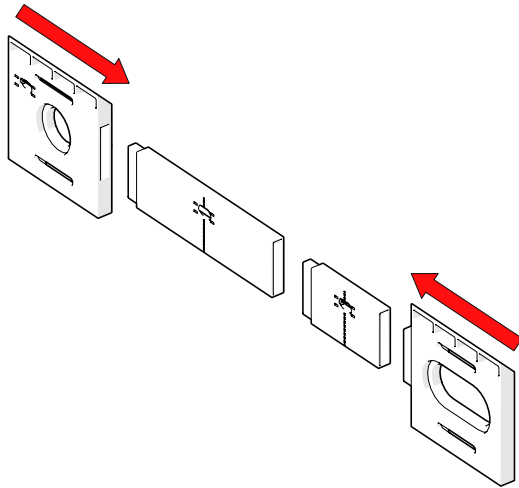
TOOLS REQUIRED



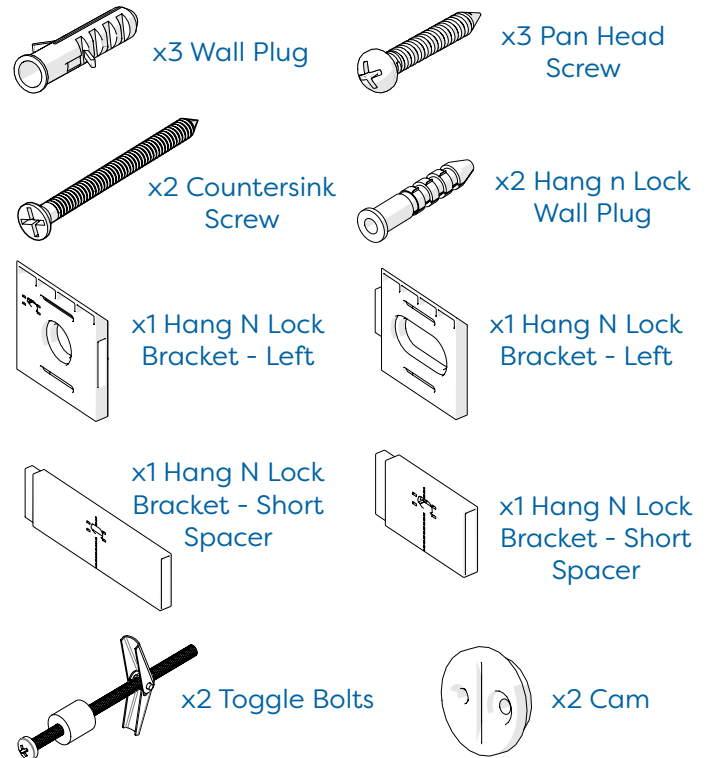
**Use a masonry drill bit for walls and ceramic drill bit for tiles.*

BRACKET ASSEMBLY

Assemble the Hang 'N' Lock bracket sections making sure all parts are slotted tightly together.

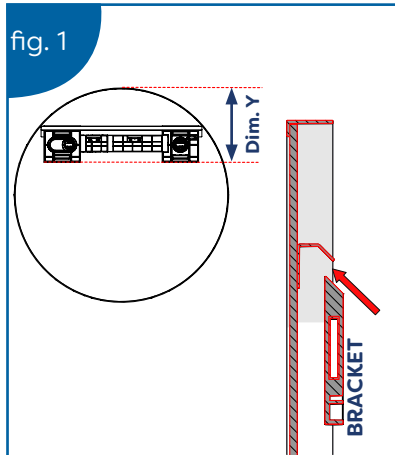


WALL FIXING PACK

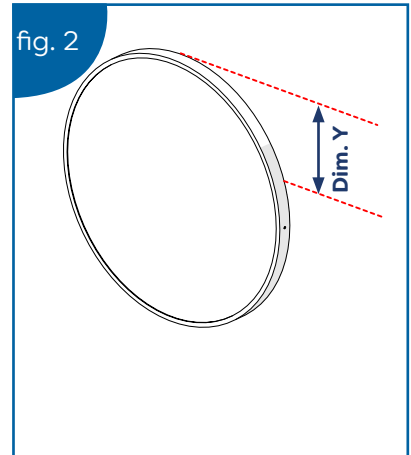


INSTALLATION

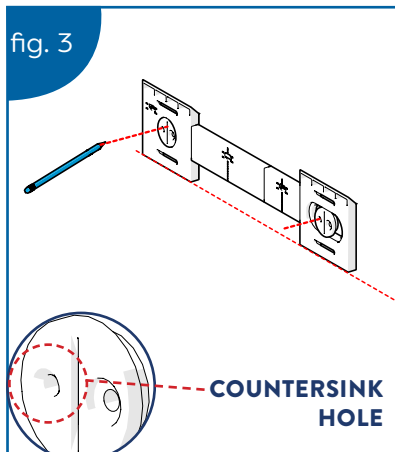
- Place the Hang 'N' Lock bracket into the 45° hanging profile on the back of the mirror. Make a note of the distance from the bottom of the bracket to the top of the mirror. (See Fig. 1)



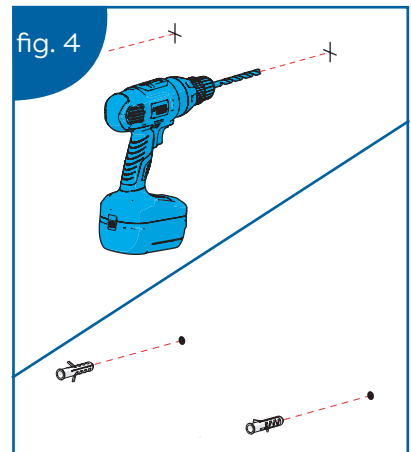
- Carefully hold your mirror in the desired location and using a pencil, draw a reference line along the top edge of the mirror. Use the bracket distance you measured earlier to create a reference line for the bottom of your Hang 'N' Lock bracket. (See Fig. 2)



- Place the bottom edge of the Hang 'N' Lock bracket onto the reference line. Mark the countersink hole centres with a pencil. (See Fig. 3) **Note: Check the cams are oriented correctly with the countersink holes positioned horizontally.**



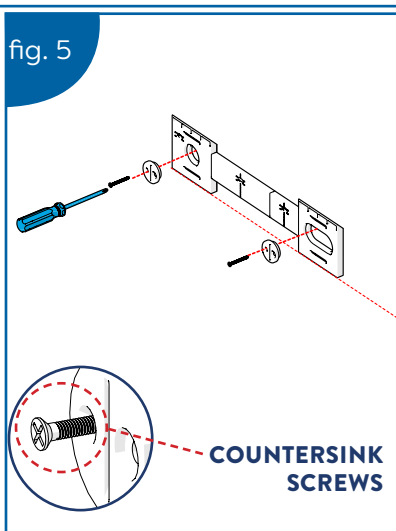
- Drill the marked holes to a depth of 45mm using a 8mm drill bit. Insert wall plugs level with the surface of the wall. For tiled surfaces, insert the wall plugs below the surface of the tiles to avoid cracking. (See Fig. 4) **Note: Wall plugs supplied are for solid walls only. For other wall types, use specialist fixings available from DIY stores.**



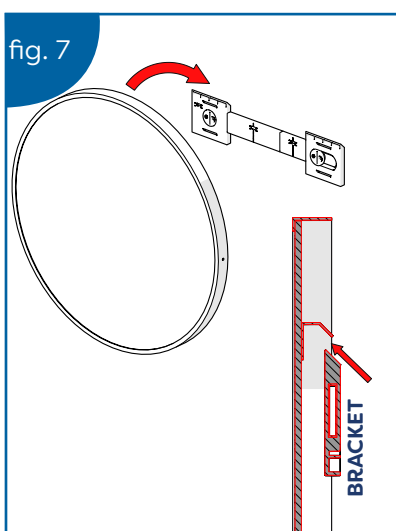
NOTE:

For **CAVITY WALLS** or **PLASTERBOARD** use toggle bolts provided. See **TOGGLE BOLT INSTALLATION**. Once complete, continue to Step 6.

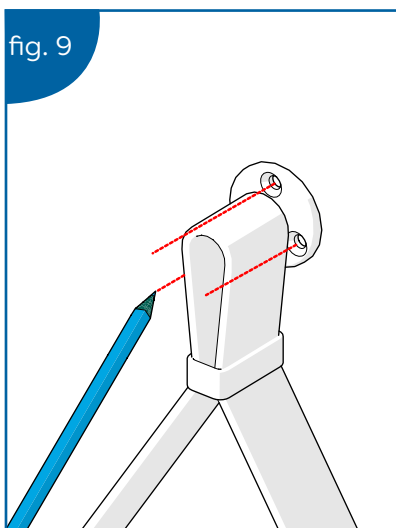
5. Insert the countersink screws through the cams and loosely secure the Hang 'N' Lock bracket to the wall. (See Fig. 5)



7. Hang the mirror onto the Hang 'N' Lock bracket. Ensure the mirror has securely located onto the bracket before letting go. (See Fig. 7)

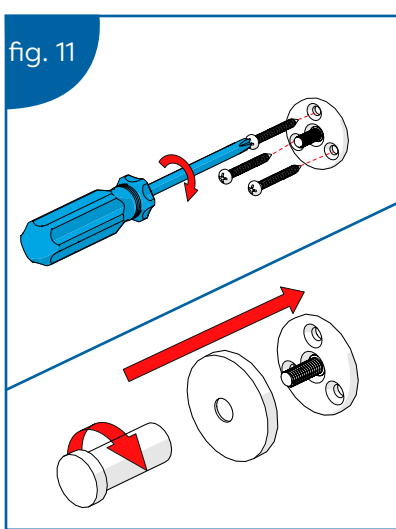


9. Place the hook bracket behind the loop of the strap and mark hole centres using a pencil. (See Fig. 9)



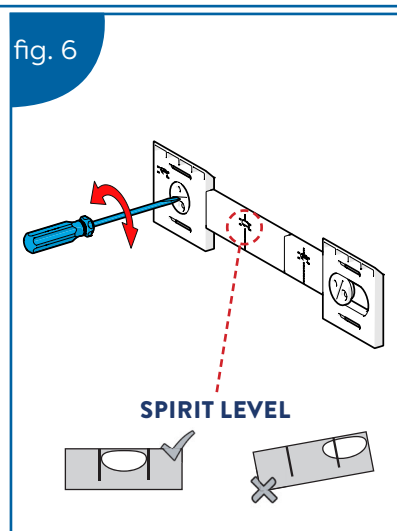
11. Insert screws through the hook bracket and fasten in place. Once secure, place the cover over the bracket and screw on the hook. (See Fig. 11)

Note: Do not overtighten.



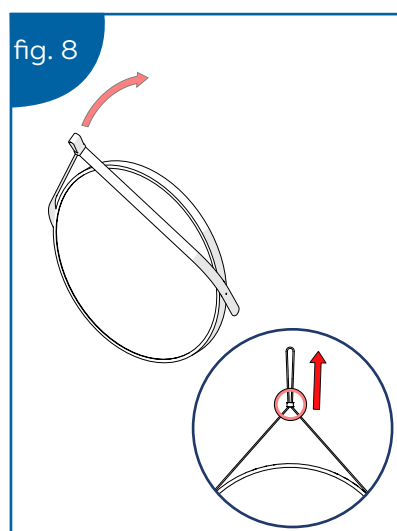
6. With the Hang 'N' Lock bracket loosely attached to the wall, adjust for height and level by rotating the cams with a flat head screwdriver. **Note:** Use the attached spirit level as a guide. Once complete, fully tighten the mounting screws to securely fix the brackets into position. (See Fig. 6)

Note: Do not overtighten.

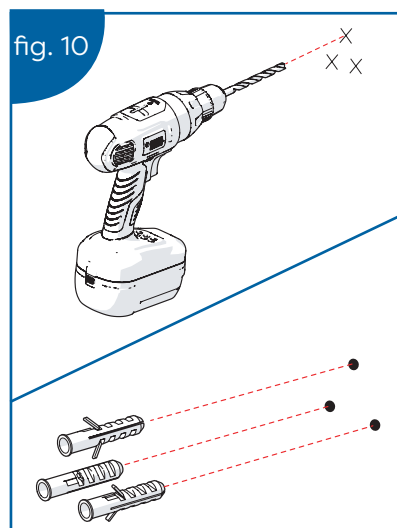


8. Lift the strap up against the wall. (See Fig. 8) **Note:** Ensure the toggle is at the highest position.

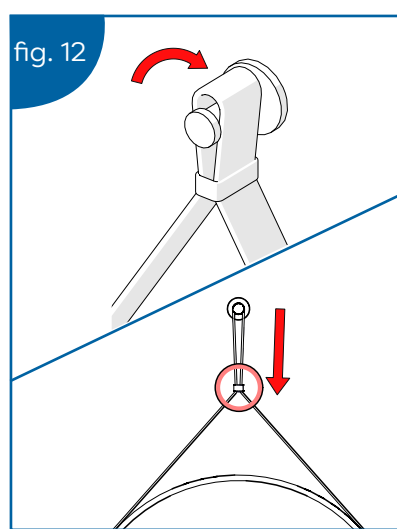
IMPORTANT! The strap is decorative and not load bearing. Ensure the weight of the mirror is supported by the bracket not the strap.



10. Drill the marked holes to a depth of 45mm with a 6mm drill bit. Insert wall plugs level with the surface of the wall. For tiled surfaces, insert the wall plugs below the surface of the tiles to avoid cracking. (See Fig. 10) **Note:** Wall plugs supplied are for solid walls only.

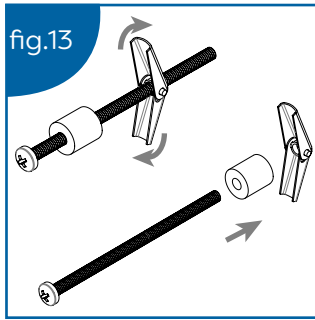


12. Loop the strap over the hook. The strap tension can be adjusted by sliding the toggle down. (See Fig. 12) **IMPORTANT!** The hook and strap are not load bearing.

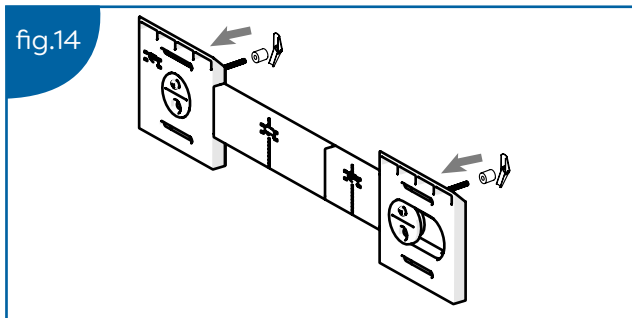


TOGGLE BOLT INSTALLATION

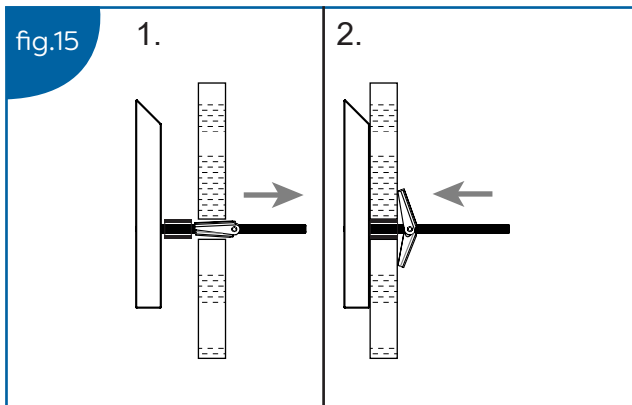
During **Step 4 & 5**, if toggle bolts are used, follow the steps bellow:



- i) Drill marked holes with an 11mm drill bit.
- ii) Dismantle the toggle bolt. **(See Fig. 13)**



- iii) Insert the threaded bolt through the Hang 'N' Lock cams and reattach the plugs and spring. **(See Fig. 14)**



- iv) Push the spring loaded wall braces on the toggle bolts through the drilled holes and loosely secure the Hang 'N' Lock bracket to the wall. **(See Fig. 15)**

****Continue from STEP 6 on the main instruction leaflet****